

Prologue prologue

A library that improves the ease of your work.

A space that satisfies your urge to know more.

Staff who help you connect with others.

Whether you are embarking on a new challenge or want to consult with a specialist, the Sapporo Municipal Library and Information Center is here.

The center is a treasure trove of information useful for business and daily living.

While offering no lending service, the center ensures that books and information carefully selected by its librarians are readily available at any time. And above all, its staff look forward to seeing you.

Enjoy new encounters at the Sapporo Municipal Library and Information Center—a library that goes beyond convention.

Research Counter

The Research Counter is the place to go if:

- you have no idea which book you should consult about something you want to know;
- you are planning to open a café and want to find reference books;
- you want to check back numbers of magazines regarding the nursing care business; or
- you need a summary of trends in the construction industry.

The Research Counter staff use library materials and data to help you look for information.

Bringing drinks

Drinking and eating are permitted on the first floor. Users may bring drinks from the attached café or elsewhere to the library or take books from the library to the café.



Reserving seats

Some of the seats can be reserved online. You could use the library as your convenient second office.

(To reserve a seat, you need a library card and a password. A library card can be issued at any other library in Sapporo.)

Sapporo Municipal Library and Information Center seat reservation

Search



No lending service, which means that all books are readily available any time

You can pick up books from the collection of any library in Sapporo and return them at the Library Counter on the 1st floor. You can also make copies of items within the limitations of the Copyright Act of Japan.

The library has no literature books, children's books or picture books.

A library where users can converse among themselves

This library is where people can gather together to exchange information. With soft background music, it's the perfect place to spend time reading your favorite book on a comfy sofa.

Sapporo Municipal Library and Information Center

Sapporo Community Plaza 1F & 2F, Kita 1 Nishi 1, Chuo-ku, Sapporo

Inquiries regarding pickups and returns of reserved books
TEL: 011-208-1112

Other inquiries

TEL: 011-208-1113

FAX: 011-208-1110

Hours:

Weekdays: 9:00 – 21:00; Weekends and national holidays: 10:00 – 18:00
Closed: The second and fourth Wednesdays of each month, the year-end and New Year holidays (December 29 – January 3), and days when the Sapporo Community Plaza is closed

Access:

Directly connected to Subway Odori Station and Sapporo Chikagai Aurora Town (Underground Shopping Mall)

The center has no parking lot. The Sapporo Community Plaza has a fee-based lot, Times Parking. (The entrance of Times Parking faces Soseigawa-dori Avenue, a northbound one-way street on the east of the Sapporo Community Plaza.)



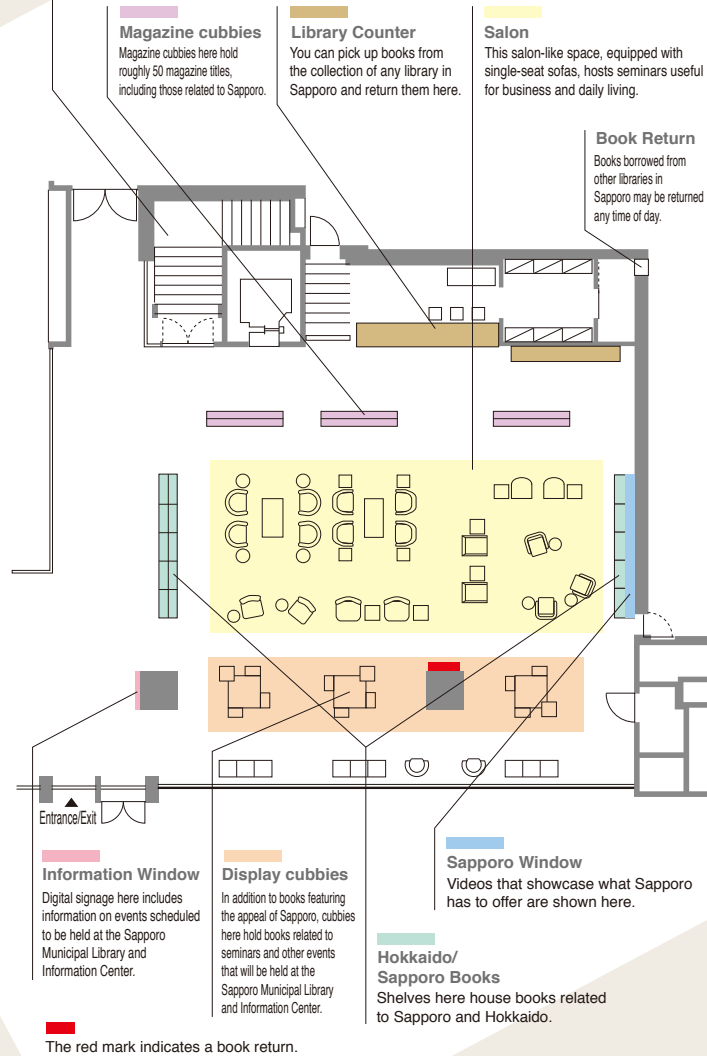
Terms of Use

The Sapporo Municipal Library and Information Center provides information useful for business and daily living. Use the information at your own responsibility. For those who want a private business or daily life consultation, the center refers them to relevant specialized institutions. Before you download data based on information provided in the library materials, be sure to carefully read the instructions and notes contained in the materials. The center will not be held responsible for any damage to devices, any detriment or any other adverse circumstances that may arise from the use of such data

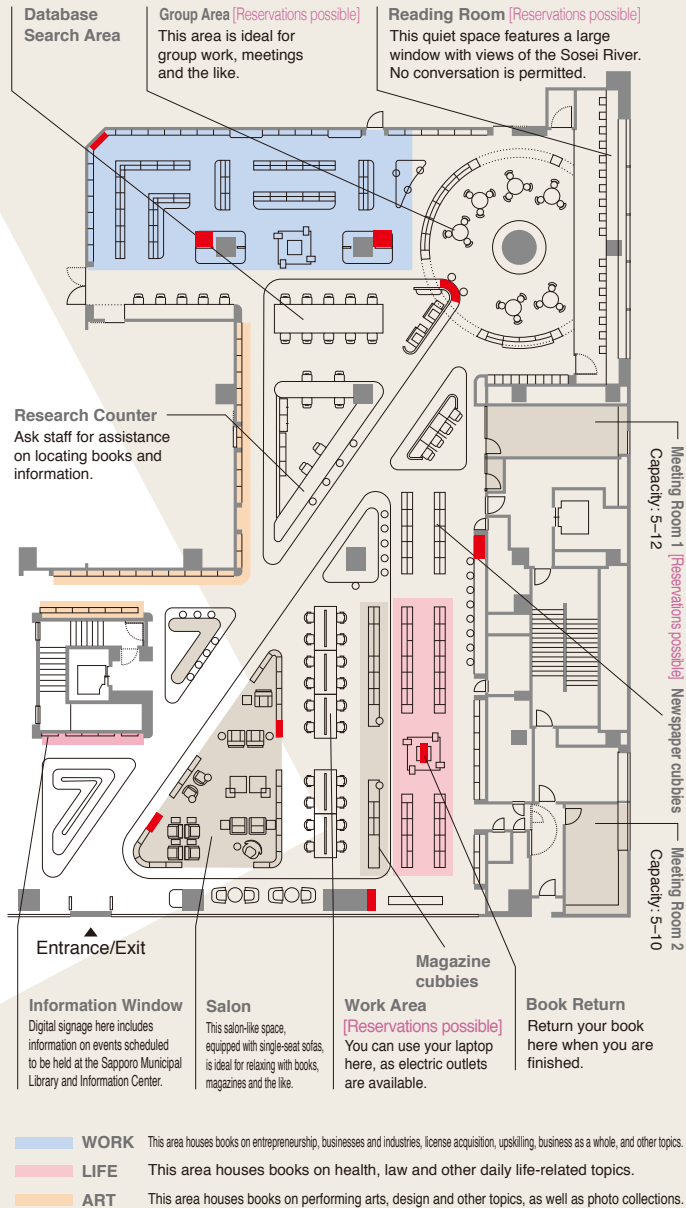
WORK
LIFE
ART

1st Floor

Stairs and elevator (dedicated to the Sapporo Municipal Library and Information Center)
You may pick up a book, magazine or newspaper housed on the 1st and 2nd floors and read it anywhere on either floor.



2nd Floor



Sapporo Municipal Library and Information Center Guide

